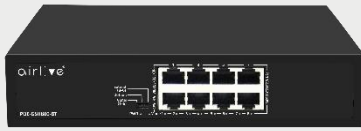


8-port Gigabit POE Switch, 802.3at/bt, 120W

8-Port Gigabit incl 8x30W PoE (port1~2 60W)

POE-GSH800-120-BT

airlive®



802.3at/bt
30w/60W

Port#1~2
60W Hi PoE

Gigabit
RJ45

Surge / ESD
protection

Hardware
VLAN

Extend Mode
250m

Plug&Play

PoE
Watchdog

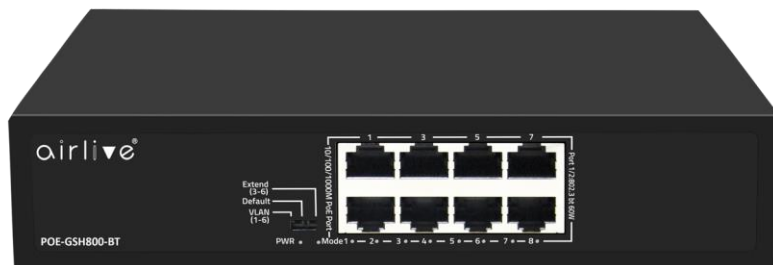
Overview

802.3af/at/bt PoE+ Gigabit Switch, with Port#1~2 Hi PoE 60W

The AirLive POE-GSH800-120-BT Gigabit switch is compliant with 802.3af(15W)/802.3at(30W)/802.3bt(60W). It supports 8 PoE ports. Total of PoE power is 120W. Port 1 and 2 support Hi power PoE up to 60W that satisfy high power needed equipment such as Thin PC, PoE LED, high power IPCAM, etc.

8-Port Gigabit PoE+ Switch with VLAN

The AirLive POE-GSH800-120-BT switch is a plug and play unmanaged PoE switch with VLAN and 250meter cabling extension, that you can set easily by its DIP switch. When either the VLAN mode or Extend mode is enabled the PoE Watchdog function will also be active.



DIP Switch

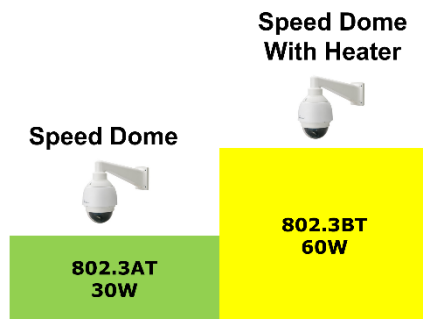
PoE port Gigabit
60W port 1~2
30W port 1~8

Features

- All 8-port, each port delivers Gigabit high speed
- 8 x PoE port (up to 30W, Port #1~2 up to 60W)
- PoE power, supports 802.3at/802.3bt PoE+ / PoE++
- Internal Power 120W
- VLAN Mode, Extended Mode: transmission of up to 250M in Extend Mode
- Setting by hardware DIP switch
- Surge Protection; ESD Protection
- PoE Watchdog in VLAN and Extend mode.

Efficient PoE technology BT Hi Power and AT PoE.

Connect several PoE devices to the switch, Port 1 and 2 of the switch can power devices up to 60W. 60W can be used by high power IP camera or by PoE Led, thin clients. Giving you much more flexibility on the usage, as you are no longer restricted to only 30W. Other devices like Access Points or normal IP cameras can connect to any of the PoE ports on the switch and by power on up to max 30W (at).



VLAN and Extend Mode

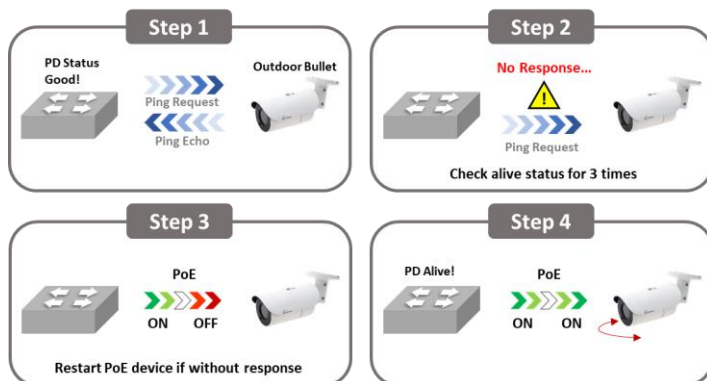
The POE-GSH800-120-BT switch can be set in Extend mode to reach a distance of up to 250m (limited to 10Mbps), this can be very useful in locations where it hard to get power to turn on your PD device. The Extend mode makes this easier. The Extend mode is only for Port 3~6 on the switch and when enabled the transmission rate will be 10Mbps. VLAN mode: When the Port Isolation mode is enabled the PoE ports (1~6) cannot communicate with each other and can only communicate with the UP-Link port 7/8.

Efficient PoE Watch dog technology

The Switch POE-GSH800-120-BT supports PoE Watchdog when the Dip-Switch switches to either VLAN mode or Extend mode. After PoE Watchdog function enabled, the POE-GSH800-120-BT switch works as a virtual security guard. When the POE port is continuously powered but there is no traffic, the PoE watchdog will be triggered. After 2 minutes of detection, the power supply will be stopped and then powered on.

The PoE watchdog is particularly useful for cameras. For example, when the switch is turned on, it will recognize the front camera 24 hours a day, 7 days a week. If there is no data traffic from the camera, the camera is considered to be frozen, and the PoE Watchdog is used to restart the front camera to solve the problem.

*Note: Function available in VLAN or Extend Mode.



Model	AirLive POE-GSH800-120-BT
<p>Hardware</p> <ul style="list-style-type: none"> • Device Interface: 8 x 30W PoE 10/100/1000 RJ45, Port#1~2 up to 60W • Standard IEEE802.3u 100Base-TX / 100Base-FX IEEE802.3ab Gigabit 1000Base-T IEEE802.3at/af/bt PoE IEEE802.3x IEEE802.3az Energy Efficient Ethernet • Industry standard compliant EMI: FCC Part 15 CISPR (EN55032) class A EMS: EN61000-4-2 (ESD), EN61000-4-4(EFT), EN61000-4-5(Surge) Shock: IEC 60068-2-27 Free Fall: IEC 60068-2-32 Vibration: IEC 60068-2-6 • LED Indicators: PWR (power supply) Mode (DIP): VLAN, Default, Extend Link and Data • Mechanical Metal <p>Power and PoE</p> <ul style="list-style-type: none"> • Protocol: IEEE802.3bt (60W), IEEE802.3at (30W), IEEE802.3af (15.4W) • PoE Port: 8 • PoE Power Output / PoE Port: max. 60 watts (Port #1~2) and max. 30W (port 3~8) • PoE Power/ Switch:120W <p>Surge and ESD protection 4KV (Surge), 8KV (EDS)</p> <p>Switch Architecture Performance</p> <ul style="list-style-type: none"> • Fiber Medium Multi-mode Fiber: 850nm, 1310nm Transmission Distance: 550m/2Km Single-mode Fiber: 1310nm, 1550nm Transmission Distance 20/40/60/80/Km • Switching architecture: Store and Forward Switch Capacity: Back-plan up to 16Gbps Throughput; 11.9Mpps MAC Address: 8K Packet Buffer: 1Mb Jumbo Frame: 9216bytes Transfer mode: Store and forward MTBF:100000 hour 	<p>DIP Switch Control</p> <ul style="list-style-type: none"> • VLAN: Port isolation mode. In this mode PoE ports (1~6) cannot communicate with each other and can only communicate with the UP-Link port 7/8, Also, the PoE Watchdog function is Enabled. • Default: Normal mode, all port can communicate with each other, the transmission distance is within 100m, the transmission rate is 10M/100/1000M adaptive. No Watchdog function. • Extend: Extension mode, PoE power supply and data transmission distance can be extended to 250 meter at the transmission rate 10Mbps Port 3~6 only. Also, the PoE Watchdog function is Enabled. <p>Power Supply</p> <ul style="list-style-type: none"> • Input Voltage: AC100~240V • Power Supply: DC52V/2.3A <p>Environment</p> <ul style="list-style-type: none"> • Operating Temperature: -10°C~+50°C • Storage Temperature: -40°C~+85°C • Operating Humidity: 10%~90%, non-condensing • Storage Humidity: 5%~95%, non-condensing <p>Standard package of switch</p> <ul style="list-style-type: none"> • Product size: 20 x 11.8 x 4.4 cm(L*W*H) • Package size: 24.5 x 19 x 6cm(L*W*H) • Product Weight/Package Weight NW: 0.6kg; G.W:0.9kg • Package content: 1 x Switch, 1 x Power Cord. <p>Standard carton package</p> <ul style="list-style-type: none"> • Quantity: 20 pcs / 1 carton • Dimensions 50.5 x 32 x 40.2 cm • Carton Weight 19Kgs <p>Ordering Information</p> <ul style="list-style-type: none"> • Model: POE-GSH800-120-BT: 8 x PoE 10/100/1000 (Port#1~2 up to 60W) • Name: 8-port Gigabit POE Switch, 802.3at/bt, 120W, Port#1~2 up to 60W, VLAN, Plug and Play

* Specification will be changed without prior notice

